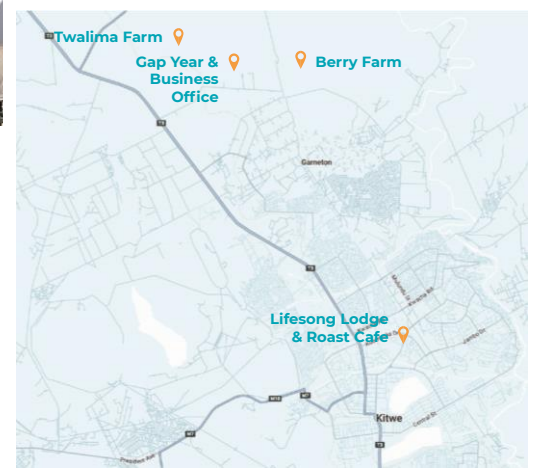




BRINGING **JOY & PURPOSE** TO ORPHANS



## BUSINESS UPDATES FOR DECEMBER 2024

**Introduction:** As the year draws to a close, we extend our heartfelt gratitude for your unwavering support and trust in the vision. December 2024 has been a month of reflection, growth, and preparation as we navigated challenges and seized opportunities across the operations.



**Berry Farm:** At the Berry farm, we are delighted to announce the completion of the Raspberry project and the start of the harvest, a significant milestone. The construction of blueberry tunnels is nearing completion, which will provide optimal growth conditions for the plants. Further, we are also enhancing sustainability by strengthening the lake shore to mitigate soil erosion and protect vital springs.



**Living Hope Coffee Farm:** The Coffee farm has shown promise, with most plants transitioning from flowering to the young berry stage. The Catimor 129 variety, in particular, offers strong potential for the upcoming harvest season. To refine our cultivation techniques, we have partnered with a leading consultant in Zambia, gaining valuable insights into advanced farming practices. Nevertheless, the prolonged rains have created conditions conducive to fungal growth, requiring ongoing vigilance.

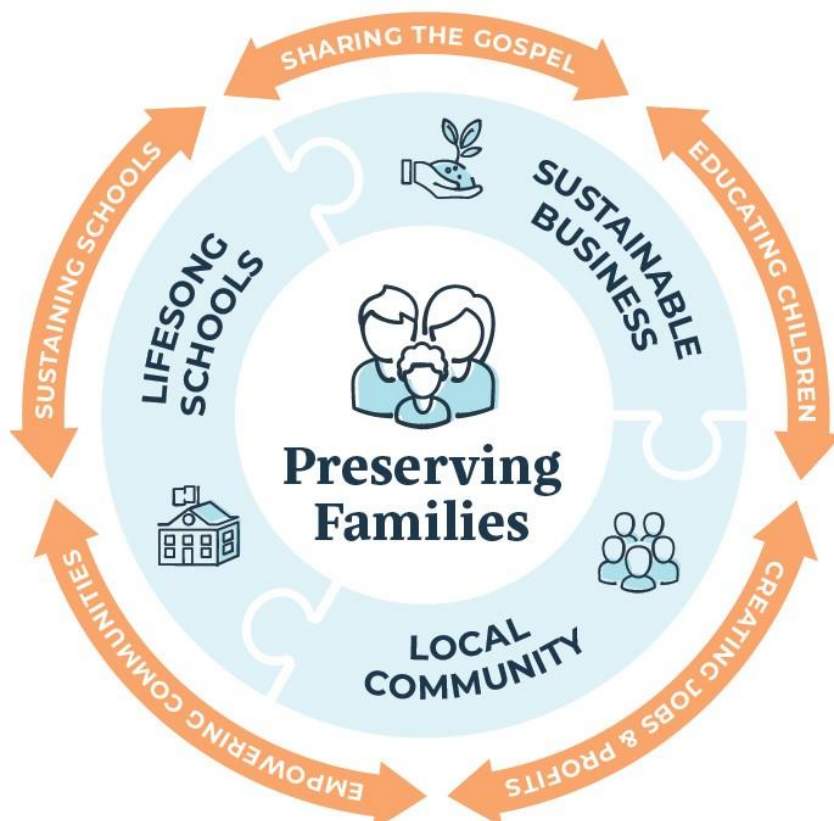
**Twalima Farm:** newly acquired spraying machine has improved efficiency by enhancing precision and reducing labor costs.

Additionally, a state-of-the-art camera system has bolstered security and operational oversight. However, electricity shortages and technical limitations with UPS batteries and night vision functionality have presented challenges. Maintenance costs for the spraying machine are also a consideration for long-term financial planning.



**Financial Performance:** Despite these challenges, December 2024 has shown promising signs of recovery. Strategic investments and operational improvements have positioned us for significant revenue growth in 2025 and beyond, particularly with the progress in raspberry harvesting and coffee production for long-term prospects. As we step into the new year, we remain committed to sustainable growth, operational excellence, and delivering value to all stakeholders.

*Wishing you a prosperous and fulfilling New Year!  
Anton Gneva*



### CAREGIVER EMPOWERMENT — in Zambia —

